



**ANT** DENİZCİLİK  
**MARINE**  
interior design

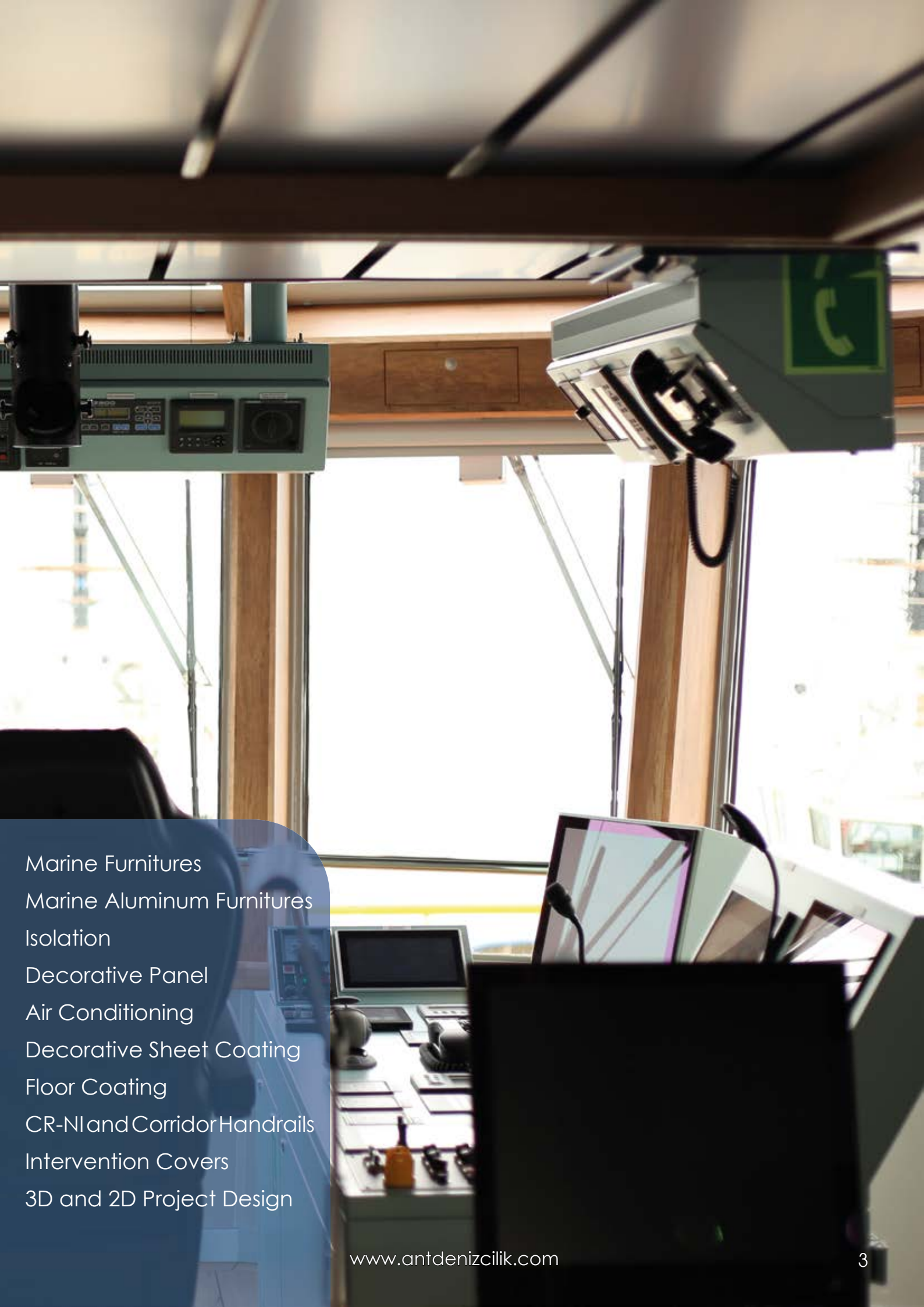
" Your solution partner in the infinity of design "



" ...present innovative solutions modern designs. "







Marine Furnitures  
Marine Aluminum Furnitures  
Isolation  
Decorative Panel  
Air Conditioning  
Decorative Sheet Coating  
Floor Coating  
CR-NI and Corridor Handrails  
Intervention Covers  
3D and 2D Project Design



**ANT** DENİZCİLİK  
MARINE  
interior design

As of today, we have passed 22 years of our sectoral activities that we started in Turkey's leading shipyards.

In the project process; the adventure that started with the design and customer approval continues to cover the warranty period.

20 years of experiences together our innovative team contribute international applications and designs what create context of the Project design and application effort.

In the spirit of team and teamwork, our thoughts and efforts will continue, following technological innovations and developments

In the limitless horizon of the design; within the international rules, our effort and determination is our principle to proceed without compromising quality.

We strive to make all employees feel aware of the fact that we are active, such as providing added value to industry, by prioritizing customer satisfaction.

Respect for labor, nature and time; We are aware of the respect for humanity. In this context, we would like to express our gratitude to all our stakeholders who bring quality work to our industry.

It is our unconditional duty to contribute to the wishes and preferences of our customers with the healthiest design and to respond to their thoughts and expectations.





# WHO ARE WE?

**ANT MARINE** was established in Tuzla Istanbul in 2002 as a result of its experience and production in interior design since 1988. It is one of the leading companies in Turkey, serving in the field of ship furniture production and interior architecture. In addition, project stages such as insulation, decorative panels, ventilation, thin sheet metal coating, floor covering are also within the scope of expertise.

**ANT MARINE** makes projects for marine vehicles of different capacities such as tankers, tugboats, military ships, container ships, motor yachts, ferries, sea buses, fishing vessels. He has contributed to the projects of more than 20 countries in the world such as England, Germany, France, Canada, Egypt, Turkmenistan, Russia, Netherlands, Azerbaijan, Denmark, Norway and Australia etc.

**ANT MARINE** It continues to serve before and after delivery with its more than 150 employees working in project analysis, design and project implementation stages. It ensures the continuity of quality in every process of the project, from design to the materials used, from manufacturing to assembly, to pre-delivery and post-delivery consultancy services. The service it provides has been registered with the ISO-9001 certificate. In addition, it has focused on certifying the brand value and quality it provides at international standards with its domestic and international R&D and feasibility studies.

## OUR VISION

Be leading company is contributed ship production in terms of comfort, technologic, design at world wide with projects are designed in the innovative ideas and rules.

## OUR MISION

To reflect experiences at the taking on our all projects, to provide satisfaction and confidence of customer in the all project steps without compromising our rule integrity and quality.

# DESIGN OFFICE

A working environment that provides flexibility and efficiency with its transparent and transitive design...







# PRODUCTION AREAS

## WORKSHOPS



Woodworking working area is an area with 3000 m2 closed and 1000 m2 open area, high-capacity woodworking and furniture machines with different functions. The pre-assembly phase is completed with the circulation of the process stages such as cutting, sizing, and massaging the material. Accessories are added and production is disassembled.

In our flooring unit, outdoor and indoor, upholstery and drapery textile products are applied according to the project scope and the approval in the design. Upholstery and seating group production continues in this workshop.

Ant Marine; It guarantees its service quality with its professional production staff who are specialized in their field. By following the sectoral developments, it reflects the innovations to the design and production stages in the most appropriate way.

Especially; It systematically monitors the project processes from the project design and approval stage to the procurement of materials, from the material processing production stage to the shipment of the products to the project area, maximizing the time-quality-compliance ratio in the projects for which interior design is made in line with customer demands. In addition, it continues the service process after delivery for all the projects it designs and produces.





# AS RECREATIVE AREA DESIGN “SHOWROOM REST AREA”



The conditions of the living spaces in sea vehicles are very important for the people who will live there, even for a certain period of time. The health and working efficiency of ship workers is proportional to the quality and conditions of the environment in these areas.

Living spaces should be allocated according to the classes and numbers of employees on each ship . Planning should be made according to the functional and quantitative diversity in living spaces.

While technical volumes are determined according to the class and capacity of the marine vehicle, living spaces are created according to the number and class of employees. Other areas should also be positioned to meet employee needs.

Staff lounges are one of the common areas where they can meet their needs such as resting, eating and drinking at certain times of the day.

Normal room temperature should be balanced, fresh air space should be created with ventilation, and a light-controlled environment should be provided with the right material selection.

It is important to produce furniture with certified and relevant class approved material selections. Modern furniture designs that are ergonomic, compatible with sea and weather conditions and offer different alternatives should be made.





In addition to the technical features, the saloons allow the ship's personnel to do social activities. It is the place where social interaction is highest. These places, where different stories and different events are told and shared, are actually the indicators of the life adventure of the ship.

The interior design in the dining room can be created with more standard lines compared to other spaces.

Messroom in our showroom is divided into two functions as eating area and TV watching-rest area. Continuity in the furniture line is foreseen in the decoration.

Warmth has been added to the environment with the selected wood tone. A smooth transition between leather upholstery and fabrics has been achieved and a balance element has been achieved.

We welcome your comments for similar designs.

"Together we are the solution contractor of aesthetics and quality..."



# AS A CUSTOM AREA DESIGN “SHOWROOM CAMARA”



In our showroom, there is one single-person cabin in standard room sizes.

Sleeping areas in marine vehicles are the most abundant areas. These areas should be positioned so that access to common areas is easy and comfortable. It should not be near noisy technical units and service passages .

In order to keep the comfort, health and working efficiency of the ship crew at an optimal level, the interior design of these special areas where they spend about a third of the day meeting their personal needs is one of the most important items.

Chamber dimensions should not be below the minimum dimensions and should not fall below the standard area.

Living spaces are designed according to the user profile and number. Furniture dimensions and design are determined by this standard parameter.

Furniture accessory details and features are important in terms of suitability for use in different climatic conditions. The accessories used must be compatible with marine criteria.



Cabins; it should be thought and designed only according to the vital need. This place should accommodate the comfort that will ensure the continuity of the employees after work. Reading, Therefore, a combination of different functional and dimensional furniture should be provided.

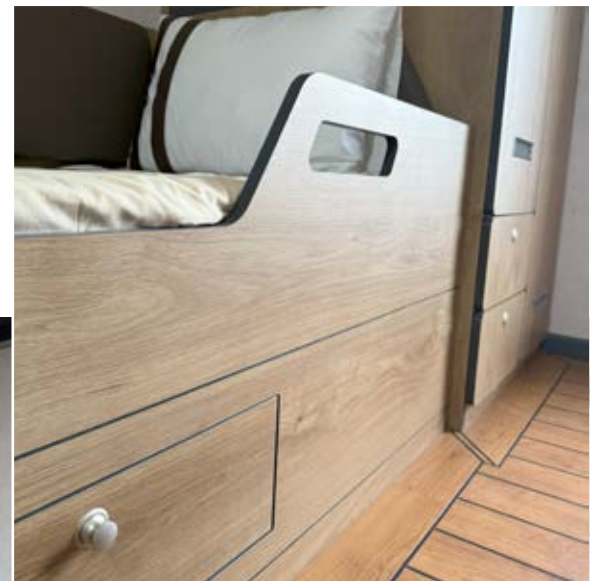
In the cabin in our showroom, wood texture was chosen that is both warm and not sharp, giving the room a feeling of spaciousness. This wood tone is balanced by the clarity of the flooring.


There is continuity in the furniture sequence. Bed, desk and shelf and work unit, cabinet with doors and drawers form a furniture axis.

The difference in level in front of the porthole is the asymmetrical detail that adds aesthetics to the design.

Safety in moving places should always be a priority .

A working environment that provides flexibility and efficiency with its transparent and transitive design.





**All together in the  
sectoral adventure;  
our route is quality**

## **Our Activities**

Marine Furnitures

Marine Aluminum Furnitures

Isolation

Decorative Panel

Air Conditioning

Decorative Sheet Coating

Floor Coating

CR-NI and Corridor  
Handrails

Intervention Covers

3D and 2D Project Design























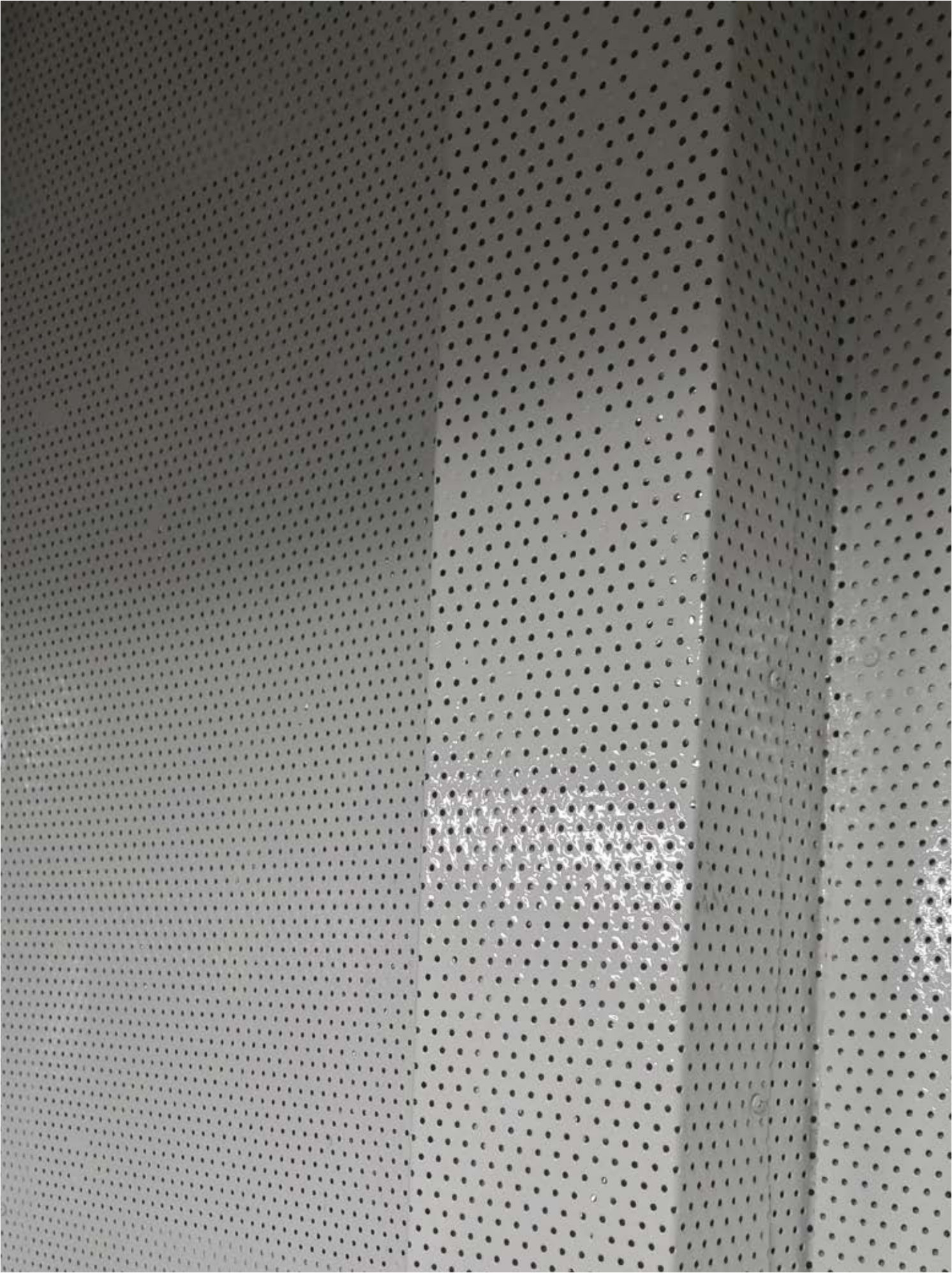
















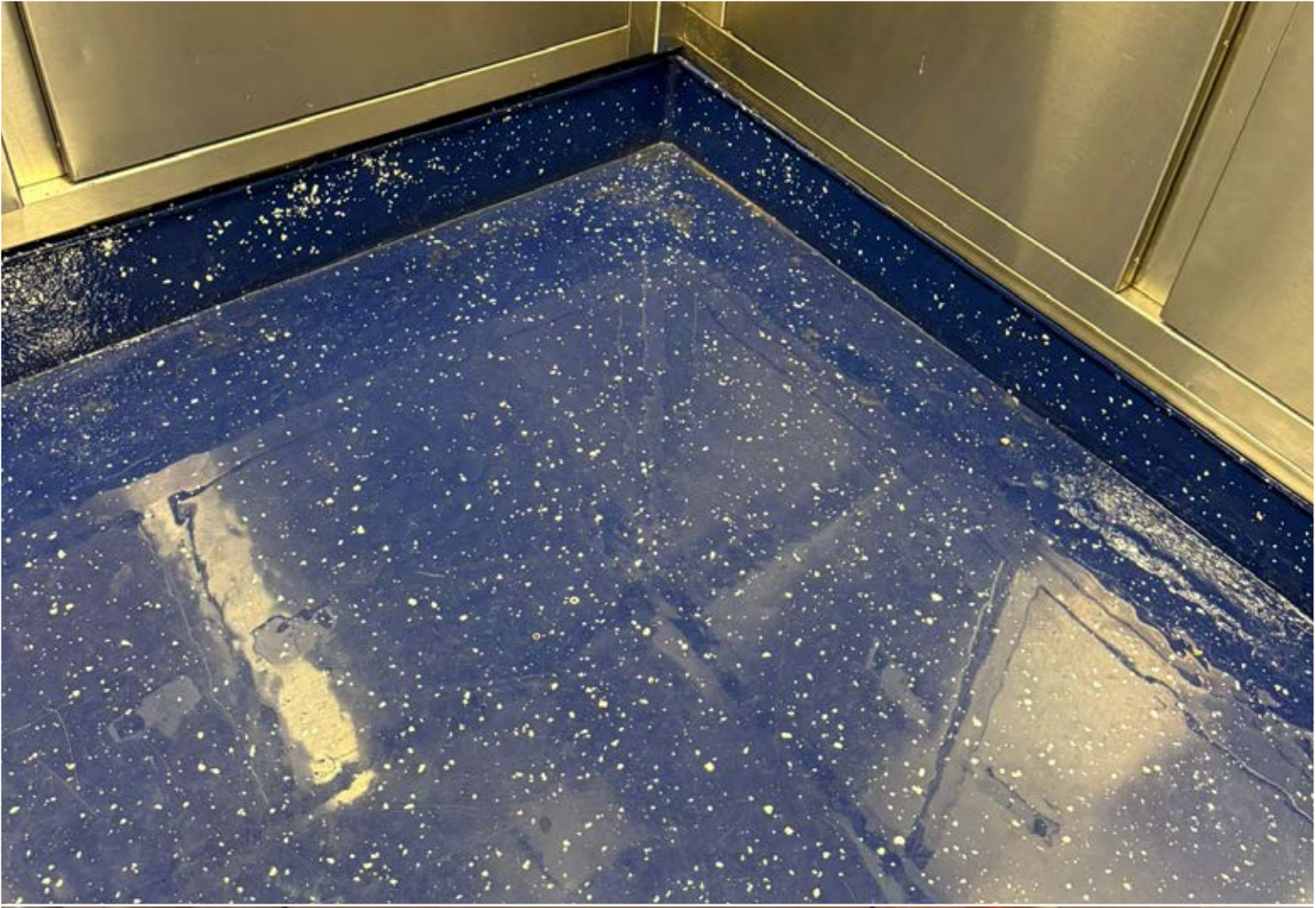










































# FURNITURE DESIGN



# FURNITURE MANUFACTURING















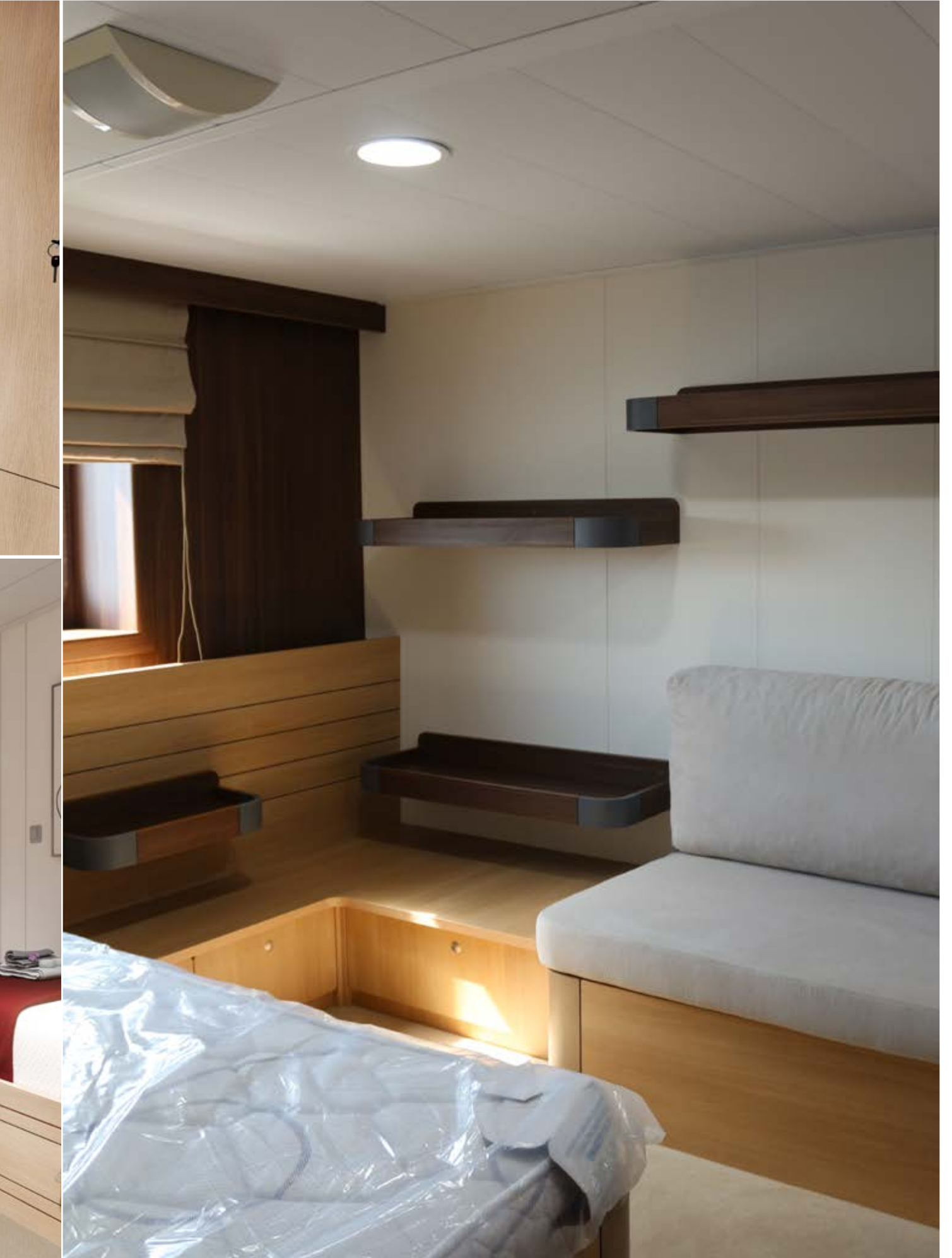














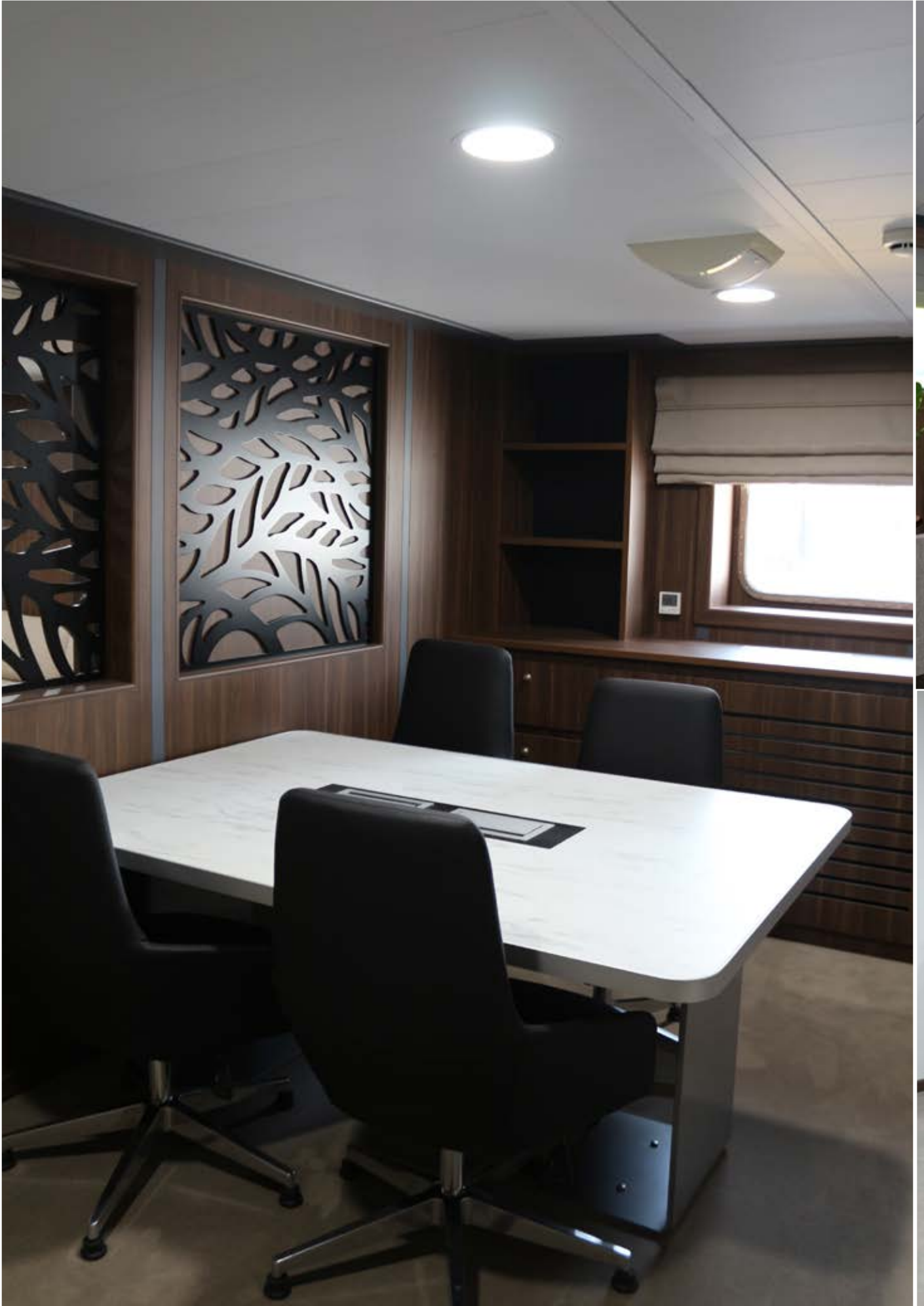








































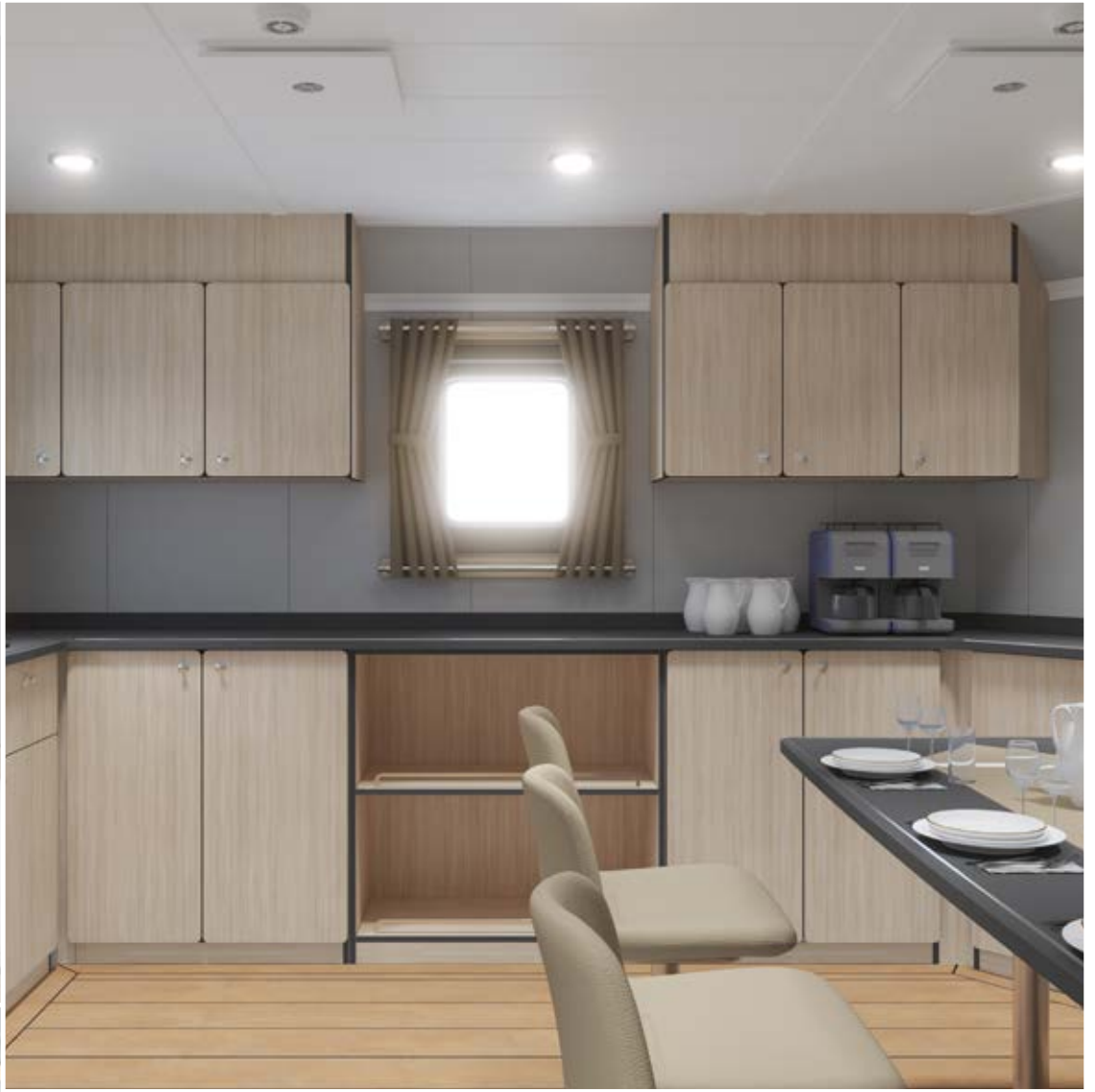








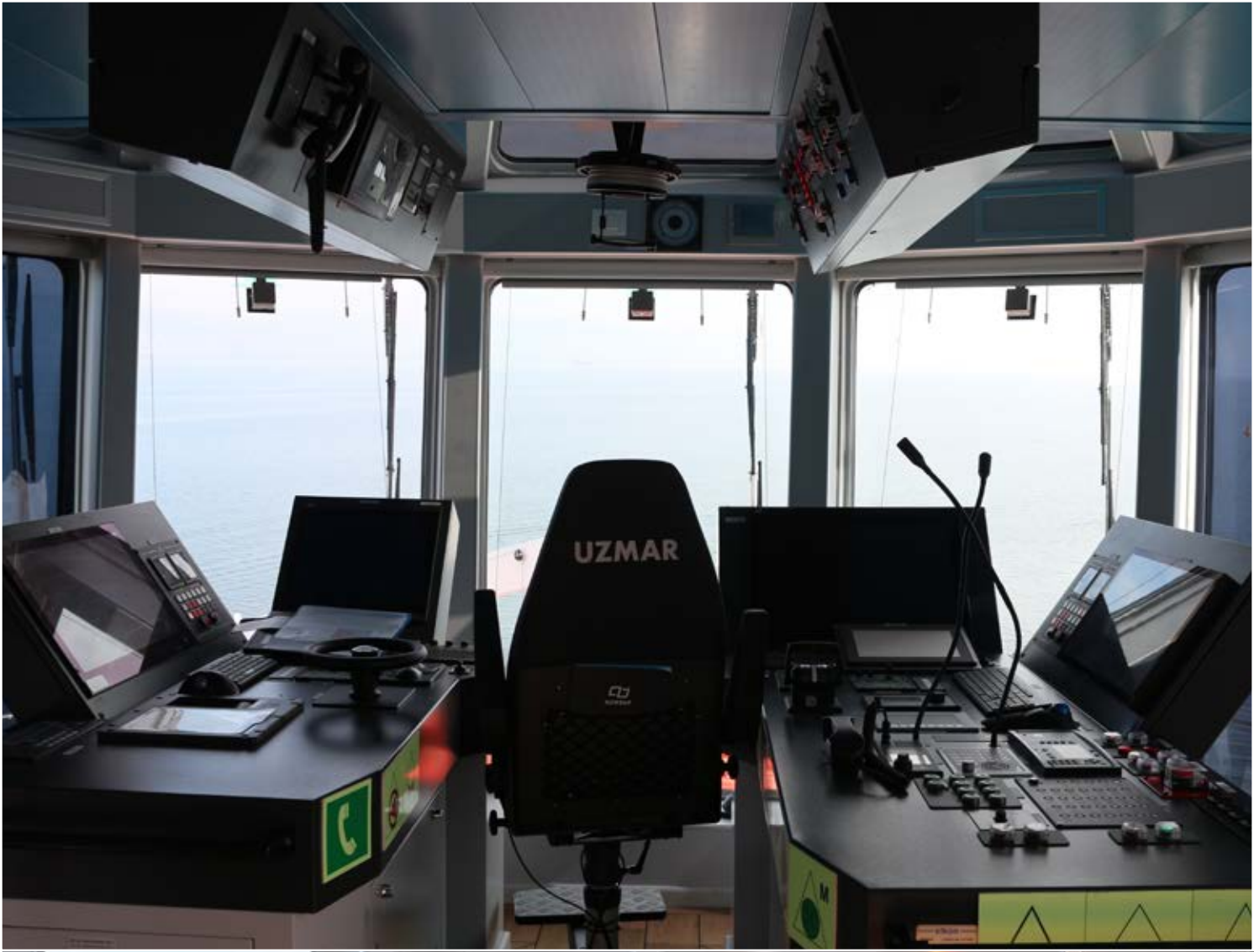






















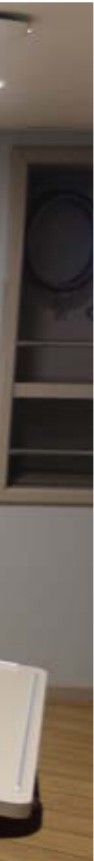
























































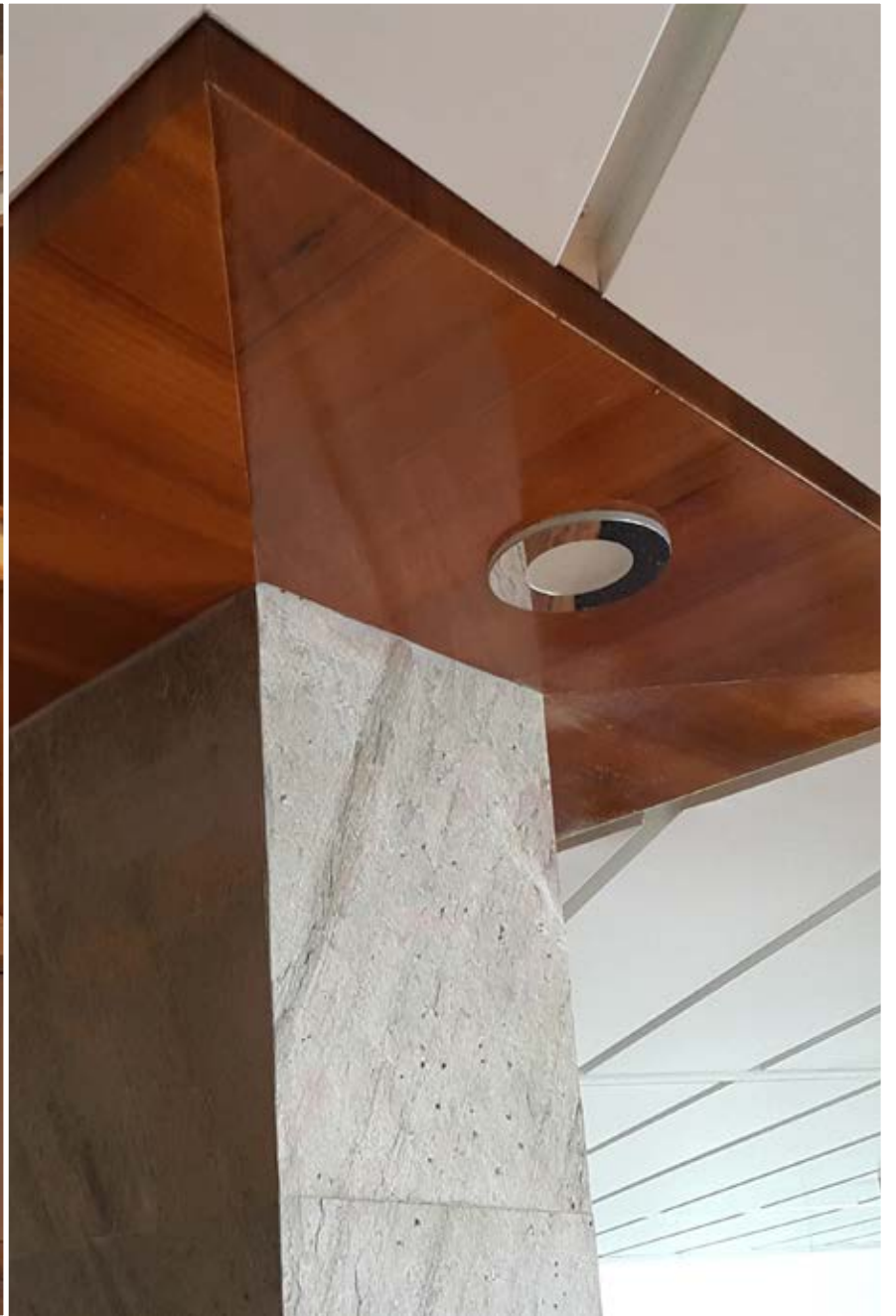






















































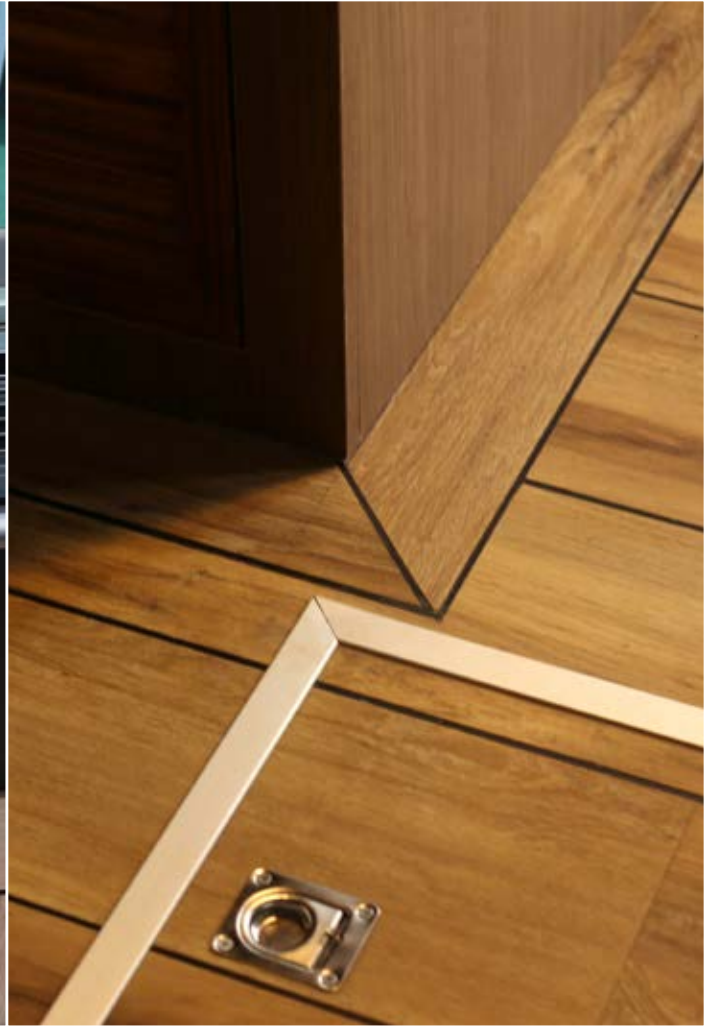


















# ALUMINIUM & HONEYCOMB NAVAL FURNITURE DESIGNS

Lightweight

Modular System

Fast Installation

Resilience

More Hardness

Thermal Insulation

Impact Resistance

**ANT** DENİZCİLİK  
**MARINE**  
interior design











# OUR REFERENCES

PROJECT NAME	PROJECT TYPE	CAPACITY	PRODUCTION SHIPYARD	DELIVERY LOCATION
MILGEM	FIRKATEYN	113.00 M	ANADOLU SHIPYARD	TURKEY
LONGERA	DRY CARGO VESSEL	8 600 DWT	ATLAS SHIPYARD	HOLLANDA
LONGEON	DRY CARGO VESSEL	8 600 DWT	ATLAS SHIPYARD	HOLLANDA
LONGEARTH	DRY CARGO VESSEL	8 600 DWT	ATLAS SHIPYARD	HOLLANDA
LONGEDEN	DRY CARGO VESSEL	8 600 DWT	ATLAS SHIPYARD	HOLLANDA
BARACCUDAS	CHEMICAL TANKER	40 111 DWT	CICEK SHIPYARD	TURKEY
PULI	CHEMICAL TANKER	15 856 DWT	CICEK SHIPYARD	TURKEY
TCG E (8 PCS)	NAVAL TRAINING BOAT	28.80 M	DUZGIT SHIPYARD	TURKEY
WHITICIER	CHEMICAL TANKER	3 000 DWT	GEMAK SHIPYARD	ENGLAND
ORATUNA	OIL CHEMICAL TANKER	2 800 DWT	GEMYAT SHIPYARD	DENMARK
ELSE MARIA THERESA	CHEMICAL TANKER	4 000 DWT	GISAN SHIPYARD	DENMARK
RAmparts/RAstar (19 PCS)	TUG BOATS	32.00-34.00 M	DEARSAN SHIPYARD	VARIOUS
ADA LEYLA	OIL CHEMICAL TANKER	119.10 M	DEARSAN SHIPYARD	
YTKB (16 PCS)	PATROL BOAT	56.90 M	DEARSAN SHIPYARD	
TUZLA CLASS	PATROL BOAT	56.90 M	DEARSAN SHIPYARD	
OPV 76 (2 PCS)	OFFSHORE PATROL VESSEL	76.80 M	DEARSAN SHIPYARD	
SIDA-SALVO	UNMANNED SURFACE VEHICLE	14.79 M	DEARSAN SHIPYARD	
M/T ALFATEM	OIL CHEMICAL TANKER	6 753 DWT	DEARSAN SHIPYARD	TURKEY
C92 TNS DENİZHAN	CORVETTE	91.40 M	DEARSAN SHIPYARD	TURKMENISTAN
SGSB (10 PCS)	PATROL BOAT	56.90 M	DEARSAN SHIPYARD	
AMB (10 PCS)		21.00 M	DEARSAN SHIPYARD	
HMB (6 PCS)	FAST INTERVENTION BOAT	32.54 M	DEARSAN SHIPYARD	
LCM	LANDING CRAFT	27.72 M	DEARSAN SHIPYARD	
HDO			DEARSAN SHIPYARD	
HSV	HYDROGRAPHIC SURVEY VESSEL	57.70 M	DEARSAN SHIPYARD	
CATAMARAN	FAST PASSENGER FERRY	37.80 M	DEARSAN SHIPYARD	
MTA ORUÇ REİS	SEISMIC RESEARCH VESSEL	86 M	ISTANBUL SHIPYARD	TURKEY
VIVALDI	ACCOMMODATION BARGES	135 M	ISTANBUL SHIPYARD	RUSSIA
NB 110	FLOATING DOCK	220 M	KUZEYSTAR SHIPYARD	RUSSIA
H-191 RO-RO	LNG RO-RO VESSEL	199.90 M	KUZEYSTAR SHIPYARD	RUSSIA
H-192 RO-RO	LNG RO-RO VESSEL	199.90 M	KUZEYSTAR SHIPYARD	RUSSIA
M/T YILDIRIM	TANKER	4 836 DWT	MARMARA SHIPYARD	TURKEY
ALBAY HAKKI BULUT	REFUELING TANKER	81.34 M	RMK SHIPYARD	TURKEY
YZB. IHSAN TOLUNAY	REFUELING TANKER	81.34 M	RMK SHIPYARD	TURKEY
LAILA THERESA	OIL/CHEMICAL TANKER	91.60 M	RMK SHIPYARD	HOLLAND
LIEKE THERESA	OIL/CHEMICAL TANKER	91.60 M	RMK SHIPYARD	HOLLAND
NB 127 ENERGY STOCKHOLM	LNG TANKER	135 M	RMK SHIPYARD	BELGIUM
NIVARIA-4	OIL/CHEMICAL TANKER	96.61 M	RMK SHIPYARD	SPAIN
T.ADALYN	ASPHALT/OIL PRODUCTS TANKER	153.90 M	RMK SHIPYARD	
BIT HERO	ASPHALT/OIL PRODUCTS TANKER	119.90 M	RMK SHIPYARD	
BIT ECO	ASPHALT/OIL PRODUCTS TANKER	119.90 M	RMK SHIPYARD	
T.AYLIN	ASPHALT TANKER	156.50 M	RMK SHIPYARD	
T.ESRA	ASPHALT TANKERS	156.50 M	RMK SHIPYARD	
POINTE DE CAUX	PRODUCT/CHEMICAL TANKER	110.00 M	RMK SHIPYARD	
COSIMA PG	7,000 DWT CHEMICAL TANKER	105.00 M	RMK SHIPYARD	
LILY PG	CHEMICAL/OIL PRODUCTS TANKER	110.00 M	RMK SHIPYARD	
T.ELINOR	CHEMICAL/OIL PRODUCTS TANKER	153.90 M	RMK SHIPYARD	
ROSE PG	7,000 DWT CHEMICAL TANKER	105.00 M	RMK SHIPYARD	
T.DAMLA (3 PCS)	OFFSHORE TUGBOAT	25.40 M	RMK SHIPYARD	
T.PALAMAR (5 PCS)	MOORING BOAT	8.85 M	RMK SHIPYARD	
T.SERVİS (2 PCS)	AGENCY BOAT	14.90 M	RMK SHIPYARD	
ELECTRA 2200	ELECTRIC TUGBOAT	22.40 M	SANMAR SHIPYARD	VARIOUS
ELECTRA 2300	ELECTRIC TUGBOAT	23.40 M	SANMAR SHIPYARD	VARIOUS
KOCAÇAY (6 PCS)	ASD TUGBOAT	32.00 M	SANMAR SHIPYARD	VARIOUS
BİGAÇAY (8 PCS)	ASD TUGBOAT	29.40 M	SANMAR SHIPYARD	VARIOUS
BOĞAÇAY (37 PCS)	ASD TUGBOAT	24.40 M	SANMAR SHIPYARD	VARIOUS
SIRAPINAR (5 PCS)	ASD TUGBOAT	22.40 M	SANMAR SHIPYARD	VARIOUS
YENİÇAY (2 PCS)	ASD TUGBOAT	18.70 M	SANMAR SHIPYARD	VARIOUS
TUNDRA 3200 (2 PCS)	ICE CLASS ESCORT TUGBOAT	31.50 M	SANMAR SHIPYARD	VARIOUS
TUNDRA 2600 (2 PCS)	ICE CLASS ESCORT TUGBOAT	25.80 M	SANMAR SHIPYARD	VARIOUS
VECTRA (2 PCS)	TRACTOR TUGBOAT	30.25 M	SANMAR SHIPYARD	VARIOUS
DELiÇAY (12 PCS)	TRACTOR TUGBOAT	25.30 M	SANMAR SHIPYARD	VARIOUS



PROJECT NAME	PROJECT TYPE	CAPACITY	PRODUCTION SHIPYARD	DELIVERY LOCATION
RASCAL (2 PCS)	TWIN SCREW TUGBOAT	20.40 M	SANMAR SHIPYARD	VARIOUS
BOZÇAY (4 PCS)	TWIN SCREW TUGBOAT	19.30 M	SANMAR SHIPYARD	
POYRAZKÖY	SERVICE SUPPORT VESSEL	19.91 M	SANMAR SHIPYARD	
PILOT BOAT (2 PCS)	PILOT BOAT	15.80 M	SANMAR SHIPYARD	
OVAÇAY (2 PCS)	TUGBOAT	30.45 M	SANMAR SHIPYARD	
PALAMAR (7 PCS)	TUGBOAT	10.00 M	SANMAR SHIPYARD	
TRANSVERSE	TUGBOAT	25.80 M	SANMAR SHIPYARD	
TERMINAL (4 PCS)	TUGBOAT	28.20 M	SANMAR SHIPYARD	
ALKIN KALKAVAN	CARGO/CONTAINER VESSEL	12 500 DWT	SEDEF SHIPYARD	TURKEY
ALEV KAMAN	OIL CHEMICAL TANKER	3 500 DWT	SEDEF SHIPYARD	TURKEY
AMERICA FEEDER	CONTAINER VESSEL	12 500 DWT	SEDEF SHIPYARD	GERMANY
BESIRE KALKAVAN	CONTAINER VESSEL	12 500 DWT	SEDEF SHIPYARD	TURKEY
EUROPA FEEDER	CONTAINER VESSEL	7 000 DWT	SEDEF SHIPYARD	GERMANY
G.A.M. NIYAZOW	CHEMICAL TANKER	4 000 DWT	SEDEF SHIPYARD	TURKMENISTAN
KASIF KALKAVAN	CARGO/CONTAINER VESSEL	12 500 DWT	SEDEF SHIPYARD	TURKEY
NB 216 - 41.200 DWT	CARGO/CONTAINER VESSEL	199.95 M	SEDEF SHIPYARD	
MUKADDES KALKAVAN	CARGO/CONTAINER VESSEL	12 500 DWT	SEDEF SHIPYARD	TURKEY
SELMA KALKAVAN	CARGO/CONTAINER VESSEL	12 500 DWT	SEDEF SHIPYARD	TURKEY
YARBAY KUDRET GUNGOR	AKAR CLASS FLEET SUPPORT SHIP	143.10 M	SEDEF SHIPYARD	TURKEY
WILLY	OIL PRODUCTS TANKER	7 300 DWT	SEDEF SHIPYARD	GERMANY
MILGEN 7	FIRKATEYN	113.00 M	SEDEF SHIPYARD	TURKEY
MILGEN 10	FIRKATEYN	113.00 M	SEDEF SHIPYARD	TURKEY
UKNC	NAVY TYPE SHIP		STM-RMK SHIPYARD	UKRAINE
TCG UFUK	NAVY TYPE SHIP		STM	TURKEY
ATLANTIC NB 1085	LONGLINER FISHING VESSEL	62.80 M	TERSAN SHIPYARD	NORWAY
SAYAN POLARIS NB 1068	PLATFORM SUPPLY VESSEL	89.10 M	TERSAN SHIPYARD	NORWAY
NORDICPRINCE NB 1077	LONGLINER FISHING VESSEL	53.85 M	TERSAN SHIPYARD	NORWAY
ARGOS GEORGIA NB 1078	LONGLINER FISHING VESSEL	53.85 M	TERSAN SHIPYARD	NORWAY
PROTEKSAN	MOTOR YACHT	50.00 M	TURKUAZ SHIPYARD	TURKEY
PROTEKSAN	MOTOR YACHT	53.00 M	TURKUAZ SHIPYARD	TURKEY
ALINA	CONTAINER VESSEL	6 750 DWT	TUZLA SHIPYARD	GERMANY
AURELLA	CONTAINER VESSEL	6 750 DWT	TUZLA SHIPYARD	GERMANY
ZEYNEP KIRAN	CONTAINER VESSEL	29 000 DWT	TUZLA SHIPYARD	TURKEY
RAMPARTS 3200	ASD TUGBOAT	32.00 M	UZMAR SHIPYARD	
RAMPARTS 3000 (32 PCS)	ASD TUGBOAT	30.25 M	UZMAR SHIPYARD	
RAMPARTS 3000-DD	ASD TUGBOAT	30.80 M	UZMAR SHIPYARD	
RAMPARTS 2600 (2 PCS)	ASD TUGBOAT	26.00 M	UZMAR SHIPYARD	
RAMPARTS 2500 (5 PCS)	ASD TUGBOAT	25.00 M	UZMAR SHIPYARD	
RASTAR 4200 (3 PCS)	ASD TUGBOAT	42.00 M	UZMAR SHIPYARD	
RASTAR 3600(4 PCS)	ASD TUGBOAT	35.80 M	UZMAR SHIPYARD	
RASTAR 3200 (12 PCS)	ASD TUGBOAT	32.00 M	UZMAR SHIPYARD	
RASTAR 3200W (23 PCS)	ASD TUGBOAT	32.00 M	UZMAR SHIPYARD	
ASD 3200WH (2 PCS)	ASD TUGBOAT	32.00 M	UZMAR SHIPYARD	
ASD 2300 (4 PCS)	ASD TUGBOAT	23.20 M	UZMAR SHIPYARD	
ASD 2500W (4 PCS)	ASD TUGBOAT	25.20 M	UZMAR SHIPYARD	
ATT3280 (2 PCS)	ASD TUGBOAT	32.65 M	UZMAR SHIPYARD	
ATT2875 (2 PCS)	ASD TUGBOAT	24.00 M	UZMAR SHIPYARD	
RASCAL (8 PCS)	CONVENTIONAL TUGBOAT	20.40 M	UZMAR SHIPYARD	
TRACTOR (2 PCS)	VOITH TUGBOAT	30.75 M	UZMAR SHIPYARD	
TRACTOR V3900-DF (2 PCS)	VOITH TUGBOATS	39.00 M	UZMAR SHIPYARD	
RAPIDE (10 PCS)	PUSHER TUGBOATS	45.60 M	UZMAR SHIPYARD	
TS1500 (5 PCS)	LINE HANDLING BOATS	15.00 M	UZMAR SHIPYARD	
TS1200 (7 PCS)	LINE HANDLING BOATS	12.50 M	UZMAR SHIPYARD	
MOORING BOAT	LINE HANDLING BOATS	11.90 M	UZMAR SHIPYARD	
MPV 4600	ALL OFFSHORE VESSELS	46.00 M	UZMAR SHIPYARD	
RAMPAGE	ALL OFFSHORE VESSELS	60.00 M	UZMAR SHIPYARD	
PB 1500	PILOT BOATS	15.00 M	UZMAR SHIPYARD	
RAVEN 1200 (2 PCS)	PILOT BOATS	12.33 M	UZMAR SHIPYARD	
AUTOPLAN	KILAVUZ (PILOT) BOTU	11.67 M	UZMAR SHIPYARD	
CLIPPER LEADER	CHEMICAL TANKER	10 000 DWT	YARDIMCI SHIPYARD	
CLIPPER LEGEND	CHEMICAL TANKER	10 000 DWT	YARDIMCI SHIPYARD	DENMARK
ZUBEYDE ANA	TUG BOAT	34.00 M	YARDIMCI SHIPYARD	TURKEY



# ANT DENİZCİLİK

## MARINE

interior design



ISO 14001:2015



ISO 9001:2015



ISO 45001:2018

Ant Denizcilik Çelik Kont.İnş.Mobilya  
San.Tic.Ltd.Şti.  
Anadolu Mahallesi Adak Sokak No:7  
Tuzla - İstanbul / Türkiye  
Phone +90 (216) 494 28 01  
E-Mail ant@antdenizcilik.com  
Web www.antdenizcilik.com

